

Leafy Spurge Cover 2023

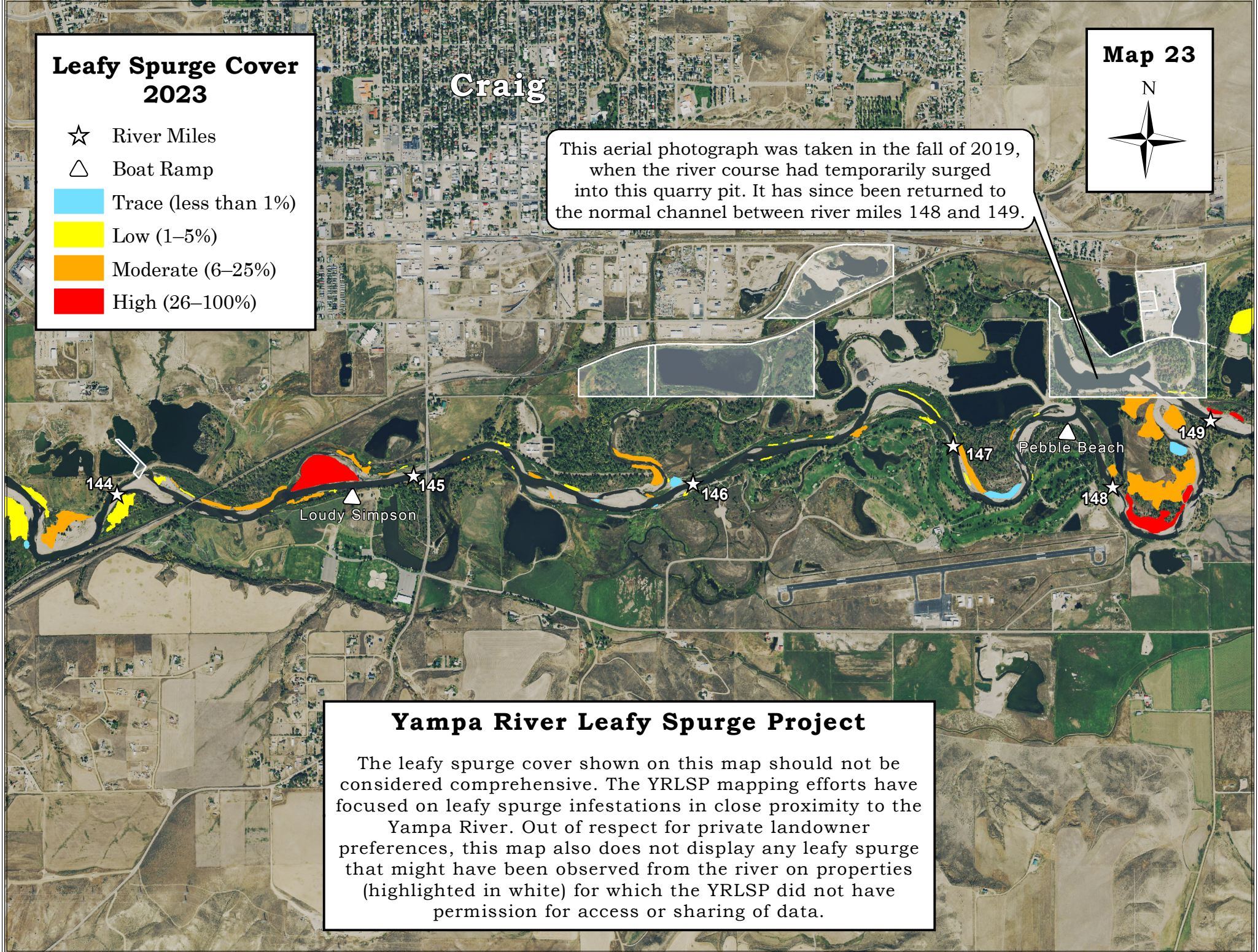
- ☆ River Miles
- △ Boat Ramp
- Trace (less than 1%)
- Low (1–5%)
- Moderate (6–25%)
- High (26–100%)

Craig

Map 23



This aerial photograph was taken in the fall of 2019, when the river course had temporarily surged into this quarry pit. It has since been returned to the normal channel between river miles 148 and 149.



Yampa River Leafy Spurge Project

The leafy spurge cover shown on this map should not be considered comprehensive. The YRLSP mapping efforts have focused on leafy spurge infestations in close proximity to the Yampa River. Out of respect for private landowner preferences, this map also does not display any leafy spurge that might have been observed from the river on properties (highlighted in white) for which the YRLSP did not have permission for access or sharing of data.